



# TAIKO KIKAI INDUSTRIES CO., LTD.

<https://www.taiko-kk.com/en/>

209-1 Shimotabuse, Tabuse-cho, Kumage-gun, Yamaguchi 742-1598 Japan

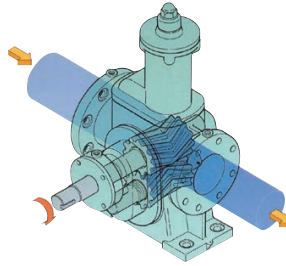
Tel : +81-820-52-3113 / Fax : +81-820-53-1001 / E-mail : business-marine@taiko-kk.com

AHTS	PSV	FPSO	Drill Ship	Semi-sub
▶	▶	▶	▶	▶

## Product

### Gear Pump

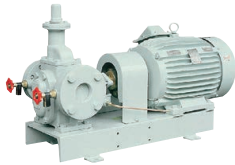
TAIKO has adopted single contact point segmental gears as the standard for our gear pumps. The segmented gear eliminates the phenomenon of liquid containment that occurs with the conventional involute gear. These high-volume type pumps for conveying fluids minimize sound and vibration and have long life spans. They are used for conveying fuel oil, lubricating oil, or liquid chemicals.



#### Gear Pump

##### NHG

- Capacity : 0.25-30m<sup>3</sup>/h
- Max. dis. Press. : 0.6MPa
- Application : LO, FO



#### Gear Pump

##### NHGH

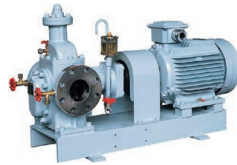
- Capacity : 0.41-20m<sup>3</sup>/h
- Max. dis. Press. : 1.6MPa
- Application : LO, FO



#### Gear Pump

##### HHC

- Capacity : 0.8-20m<sup>3</sup>/h
- Max. dis. Press. : 1.6MPa
- Application : LO, FO



#### Vertical Gear Pump

##### VG

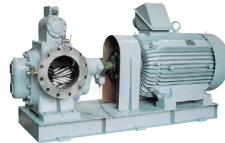
- Capacity : 12-100m<sup>3</sup>/h
- Max. dis. Press. : 0.6MPa
- Application : LO, FO



#### Gear Pump

##### HG•BHG

- Capacity : 29-200m<sup>3</sup>/h
- Max. dis. Press. : 0.6 • 1.0MPa
- Application : LO, FO



#### Gear Pump

##### SP•SJ

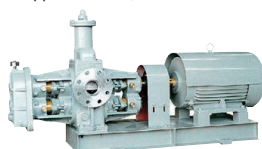
- Capacity : 0.41-100m<sup>3</sup>/h
- Max. dis. Press. : 0.6MPa
- Application : Oil, Chemical



#### Gear Pump

##### WL

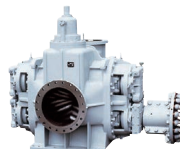
- Capacity : 0.8-100m<sup>3</sup>/h
- Max. dis. Press. : 0.6MPa
- Application : Oil, Chemical



#### Gear Cargo Pump

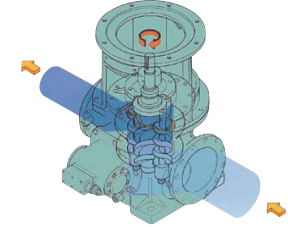
##### CGL

- Capacity : 60-1500m<sup>3</sup>/h
- Max. dis. Press. : 1.0MPa
- Application : Oil, Chemical



### Three Rotor Screw Pump

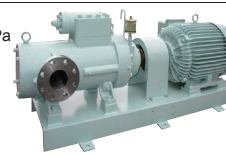
Our three screw pump consists of one main rotor encased in a sleeve and two idler rotors driven by oil hydraulic pressure. In this high-volume pump, the fluid is conveyed by rotating the main rotor. This product is well-suited to the high-pressure conveyance of lubricating fluid. It is used as a fuel oil supply, circulating pump for engines, a fuel oil burning pump for boilers and a crosshead lubrication pump.



#### Three Rotor Screw Pump

##### MSB

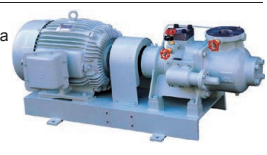
- Capacity : 4.0-15m<sup>3</sup>/h
- Max. dis. Press. : 2.5MPa
- Application : LO, FO



#### Three Rotor Screw Pump

##### MSH-X•MSE-X

- Capacity : 2.0-30m<sup>3</sup>/h
- Max. dis. Press. : 2.5MPa
- Application : LO, FO



#### Three Rotor Screw Pump

##### MST

- Capacity : 20-300m<sup>3</sup>/h
- Max. dis. Press. : 1.0MPa
- Application : LO



#### Three Rotor Screw Pump

##### MST-H

- Capacity : 20-160m<sup>3</sup>/h
- Max. dis. Press. : 1.3MPa
- Application : LO



#### Three Rotor Screw Pump

##### MSDK-MA

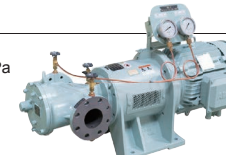
- Capacity : 0.3-35m<sup>3</sup>/h
- Max. dis. Press. : 1.0MPa
- Application : LO, FO



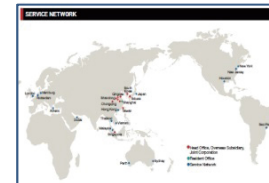
#### Three Rotor Screw Pump (MAGNET)

##### MSDK-MG

- Capacity : 4.0-35m<sup>3</sup>/h
- Max. dis. Press. : 1.0MPa
- Application : FO



### Service Network



### Reference

TAIKO have experience for Engine room Pumps for all kind of commercial and offshore vessels.